



# STUDENT TECHNOLOGY

## GETTING STARTED GUIDE



### 9<sup>th</sup>-12<sup>th</sup> WINDOWS DEVICE LOGIN

**1. Turn on your device**

Press the Power Button on the top right of the keyboard until you see your device begin to light up.

**2. If the student's name does not appear on the device, select **Other User** to begin logging into your device**

**3. Enter your Username and Password, then click the arrow**  
Username = Student ID#@ideastudent.org  
Password = Unique password created by the student

Go to [www.ideapublicschools.org/learningtech](http://www.ideapublicschools.org/learningtech) for more information and technical support.

Visite a [www.ideapublicschools.org/learningtech](http://www.ideapublicschools.org/learningtech) para más información y apoyo técnico.



# STUDENT TECHNOLOGY

## GETTING STARTED GUIDE



### 9<sup>th</sup>-12<sup>th</sup> WINDOWS DEVICE LOGIN

Students can reset their password directly from their device. Follow the steps listed below:

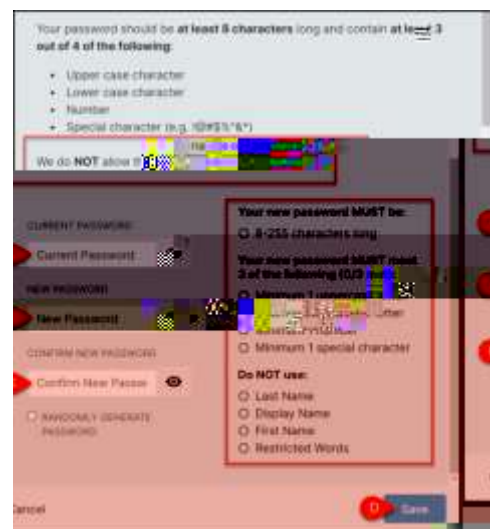
Navigate to: <https://portal.ideapublicschools.org/>

1. Click on **Need help**
2. Select **Forget Password**
3. Enter your username (STUDENTID#) and click on **Next**
4. Enter the appropriate response to your challenge questions.

*(If this is your first time logging in, you will be prompted to set your challenge questions. Follow the on screen instructions to complete this process)*

5. Enter your new password using the guidelines shown below

Type your new password  
Enter your new password again  
Click Next



Go to [www.ideapublicschools.org/learningtech](http://www.ideapublicschools.org/learningtech) for more information and technical support.

Visite a [www.ideapublicschools.org/learningtech](http://www.ideapublicschools.org/learningtech) para más información y apoyo técnico.